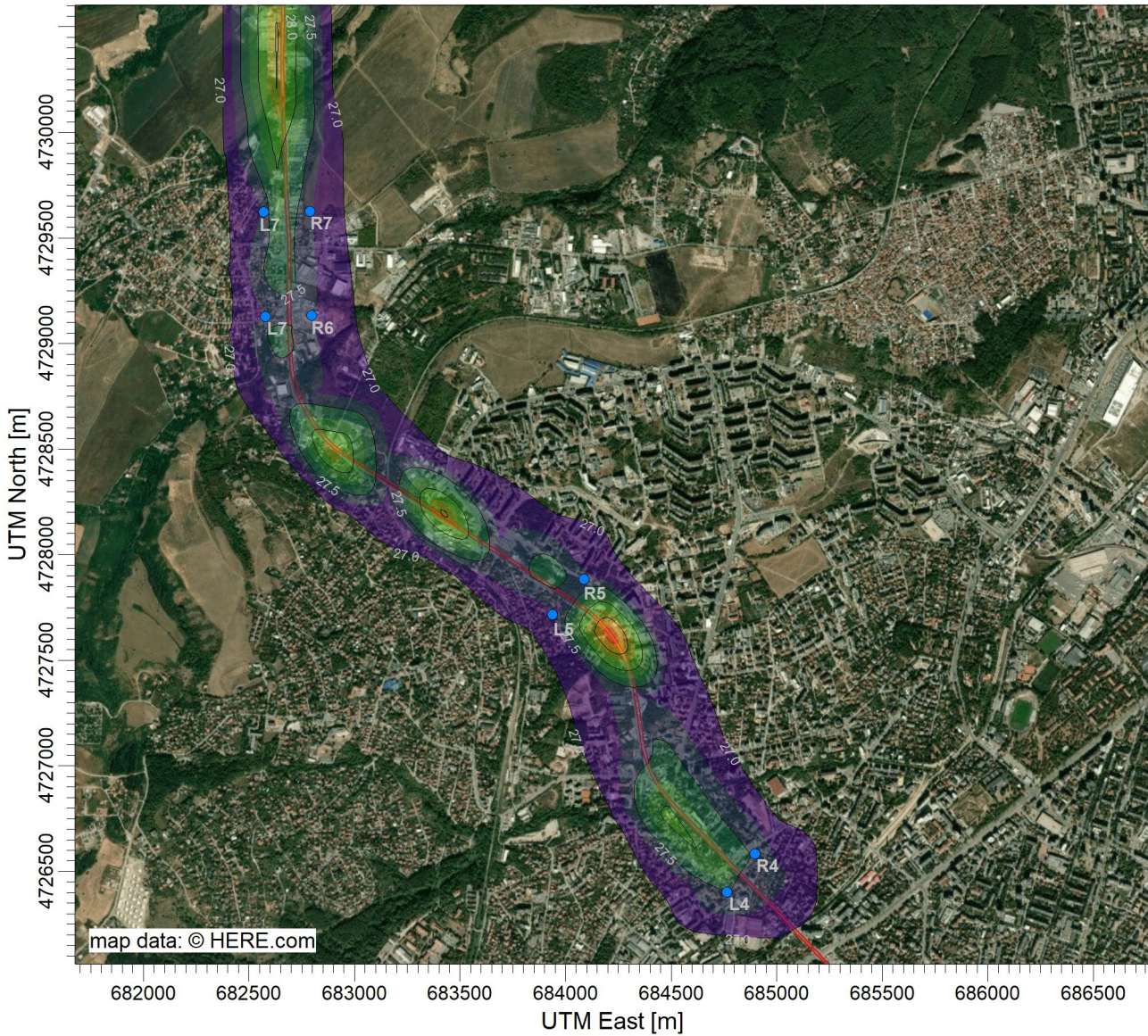


PROJECT TITLE:

Приземна средноденонощна концентрация на прах (PM)

Пътен участък 2



Max: 29.1 [$\mu\text{g}/\text{m}^3$] at (684216.94, 4727619.73)

$\mu\text{g}/\text{m}^3$



COMMENTS:

R4 - 27.46 $\mu\text{g}/\text{m}^3$
L4 - 27.51 $\mu\text{g}/\text{m}^3$
R5 - 27.30 $\mu\text{g}/\text{m}^3$
L5 - 27.17 $\mu\text{g}/\text{m}^3$
R6 - 27.31 $\mu\text{g}/\text{m}^3$
L6 - 27.25 $\mu\text{g}/\text{m}^3$
R7 - 27.28 $\mu\text{g}/\text{m}^3$
L7 - 27.27 $\mu\text{g}/\text{m}^3$

SOURCES:

8

RECEPTORS:

449

OUTPUT TYPE:
Concentration 90.4th
percentile

MAX:

29.1 $\mu\text{g}/\text{m}^3$

COMPANY NAME:

LEGEND:

— Road

SCALE:

1:32,000

0

1 km

DATE:

01/15/2026

PROJECT NO.:

SOP_Air/EIA_2026

